

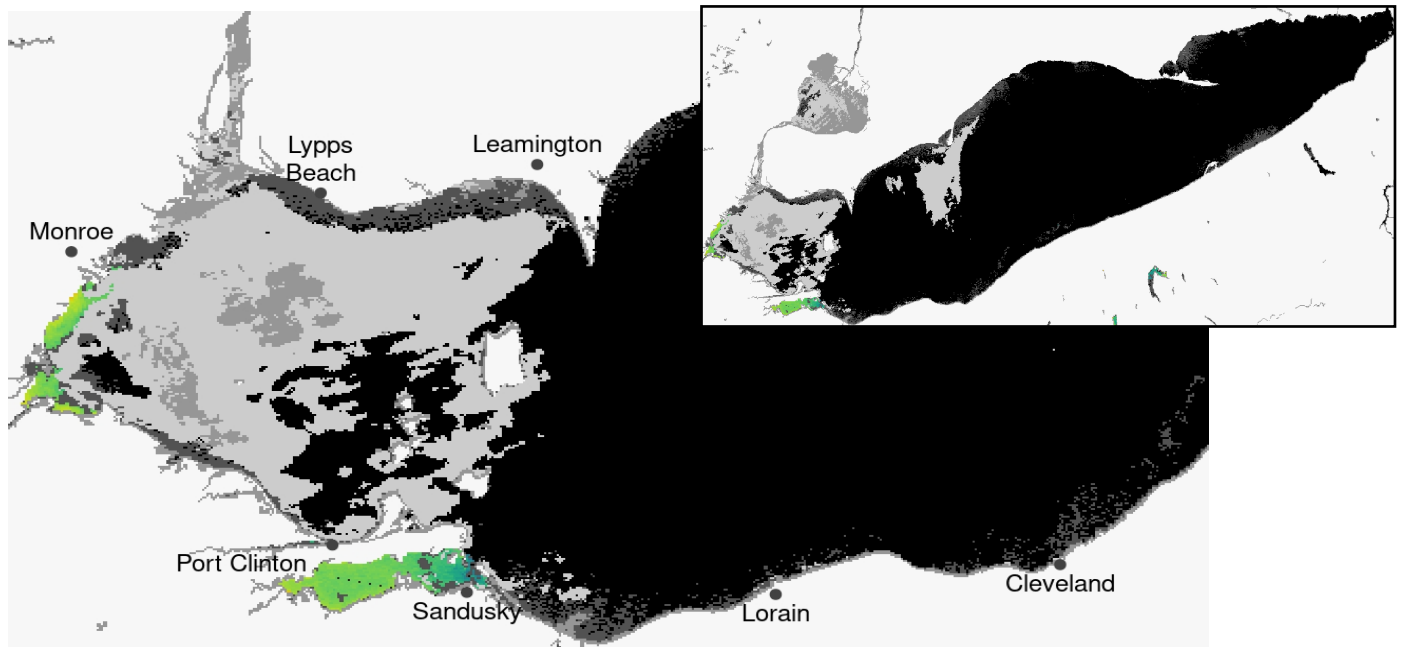
Lake Erie Harmful Algal Bloom Forecast

Imagery Analysis & Forecasts - Last Updated 2020/07/16 09:30 (EDT)

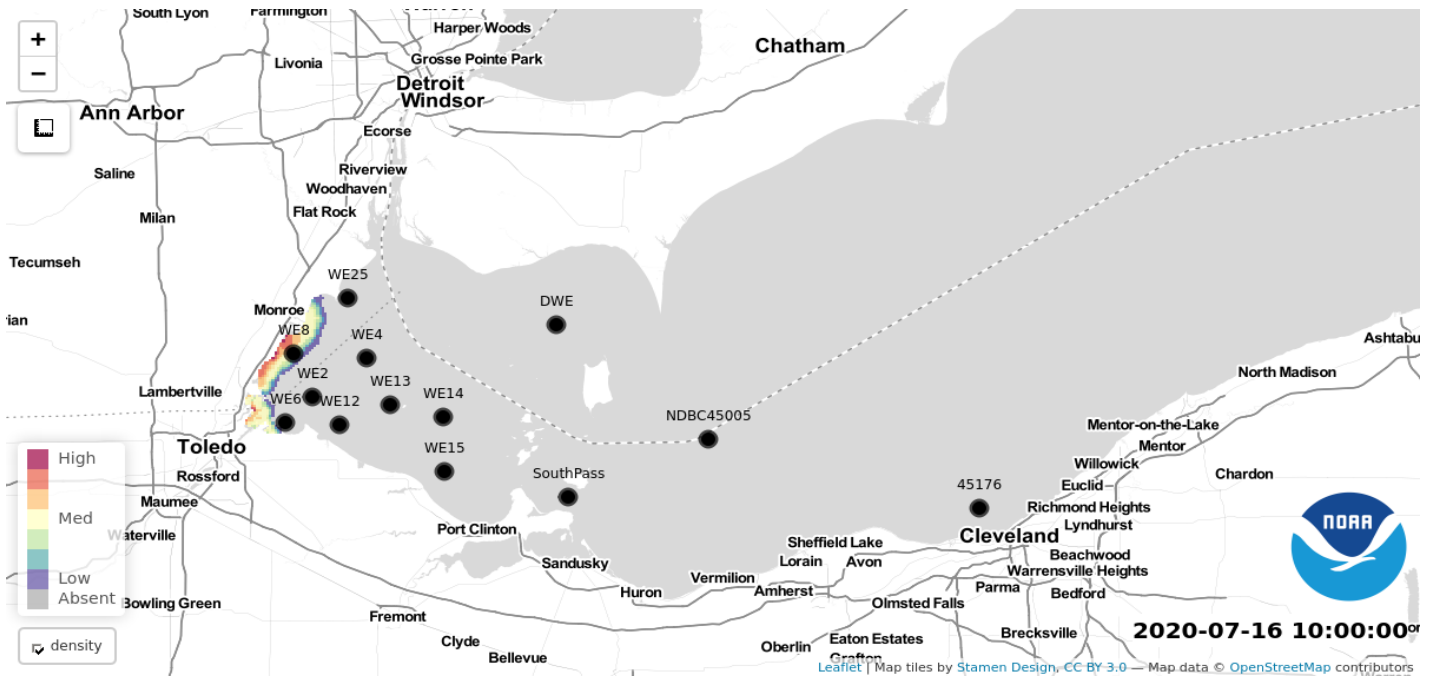


A bloom of *Microcystis* cyanobacteria continues in the western basin of Lake Erie. Recent imagery shows the bloom is present in Maumee Bay, extending north along the Michigan coast to Brest Bay and up to 5 miles east of Maumee Bay along the Ohio coast. The first surface scum formation was observed approximately 8 miles northwest of West Sister Island. Sampling (7/13) indicates toxin concentrations have increased since last week, but remain below the recreational threshold at all locations. *Keep pets and yourself out of the water in areas where scum is forming.* A small patch of *Dolichospermum* has been observed along the Ohio coast in the central basin, visible in satellite imagery.

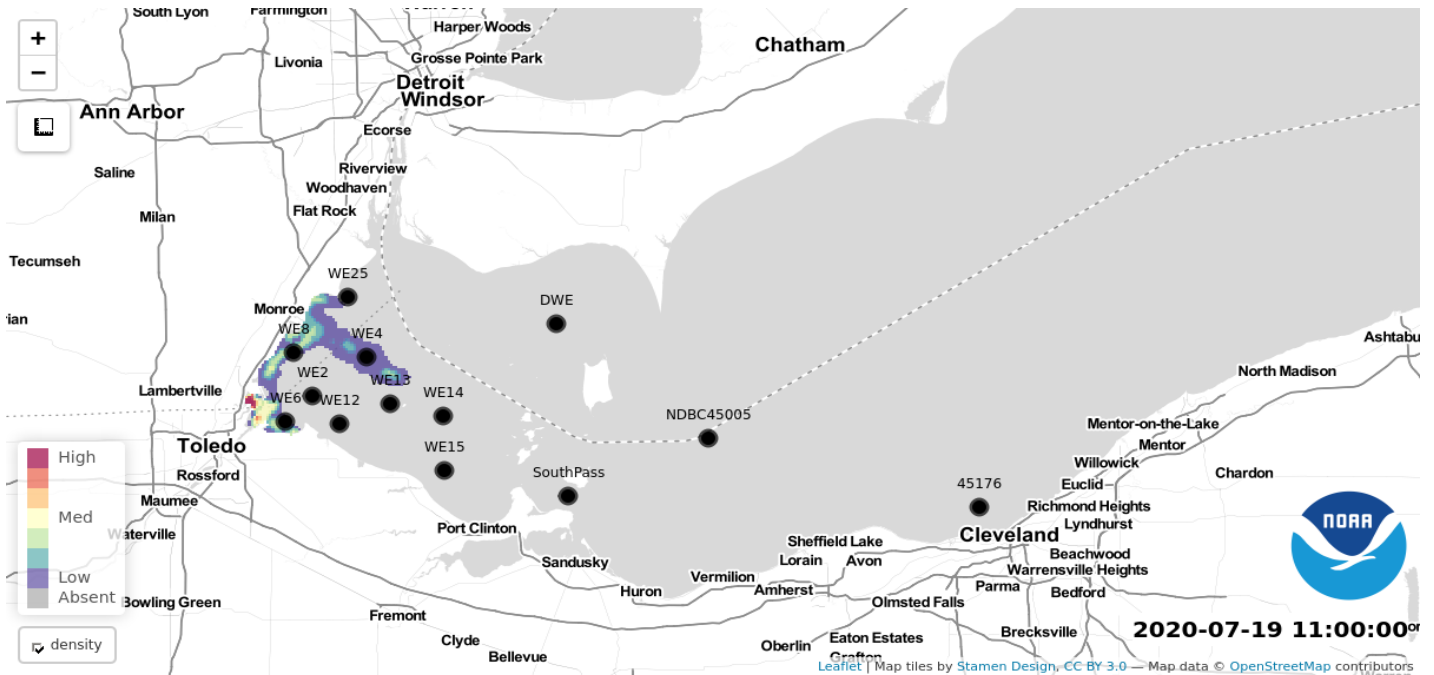
Forecast winds (3-19 kn) through Monday (7/20) will promote periods of mixing and eastern transport of *Microcystis* concentrations. - Keeney, Davis



Modeled Bloom Position & Vertical Mixing at 2020/07/16 10:00 (EDT)



72-Hour Bloom Position & Vertical Mixing at 2020/07/19 11:00 (EDT)



Additional Resources

- Find a safe place for recreation through the Ohio Dept. of Health's Beach Water Quality Advisory, [BeachGuard](#).
- Learn more about water quality sampling and data monitoring by visiting the [Ohio EPA's site for HABs](#).
- Great Lakes HAB monitoring data and forecast research by [NOAA's GLERL](#).
- Frequently Asked Questions - [FAQ's](#).