

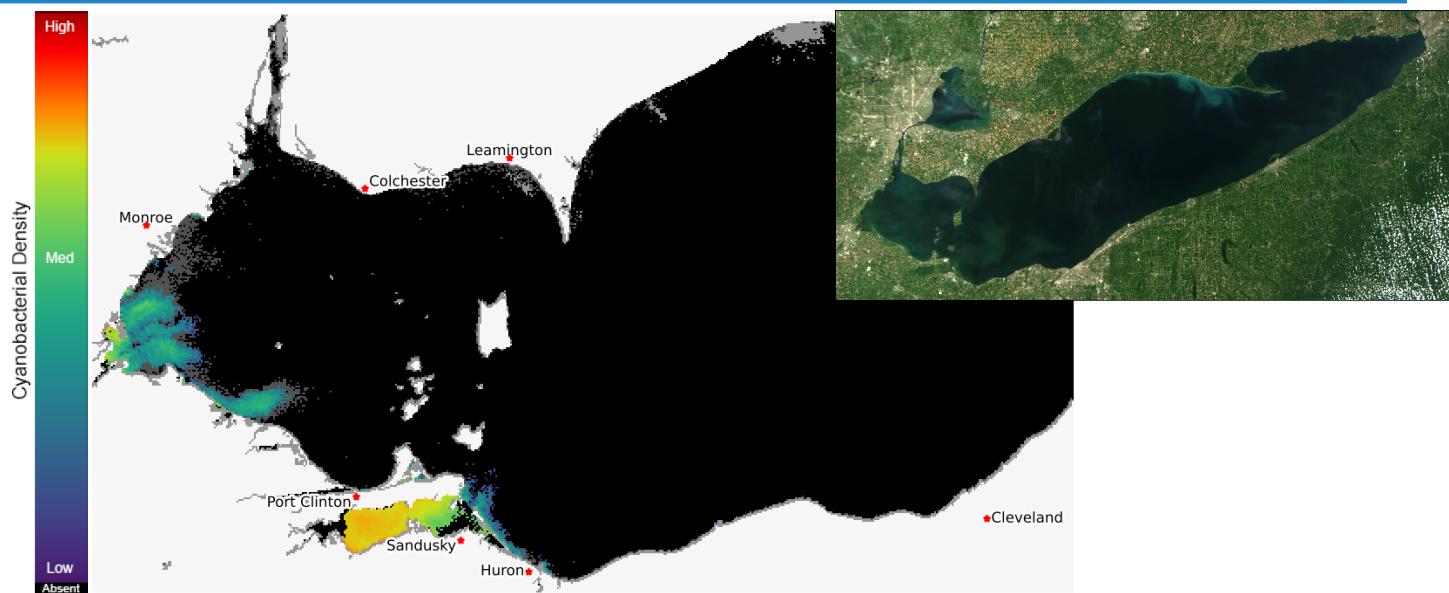
# Lake Erie Harmful Algal Bloom Forecast

2025-07-26

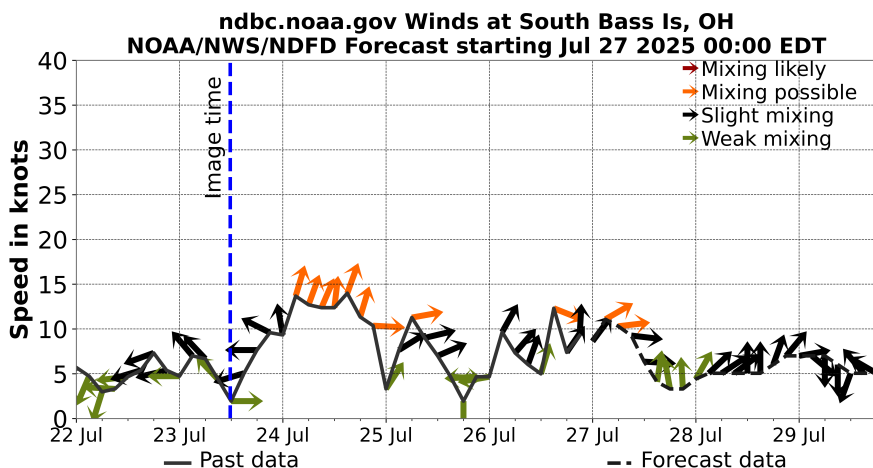
## Summary

The cyanobacteria bloom in western Lake Erie has an approximate area of 90 square miles, which is an increase in area since Jul 19. The bloom extends from Maumee Bay east to Magee Marsh Wildlife Area, OH and north towards Monroe, MI. Sandusky Bay has a local, widespread bloom of mixed cyanobacteria. Toxins have been detected in Sandusky Bay and can exceed the recreational limit (8 ug/L microcystin) in scums and discolored (green) water. Toxins have been detected below the recreational limit in western Lake Erie. They can be highly concentrated in scums! If you see scum, keep your pets and yourself out of the water. In the satellite imagery or bloom forecast position products, any areas that are orange or red are likely to have scum, especially during calm winds, see Mixing Forecast product. --St. Laurent and Hounshell 24 Jul. 2025

The past few days of imagery can be seen at [the HAB monitoring site](https://www.hab.noaa.gov/monitoring). The Lake Erie Forecast is operated by the National Centers for Coastal Ocean Science. Contact [hab@noaa.gov](mailto:hab@noaa.gov) for technical Questions. Last Updated: 2025-07-26 11 PM EST

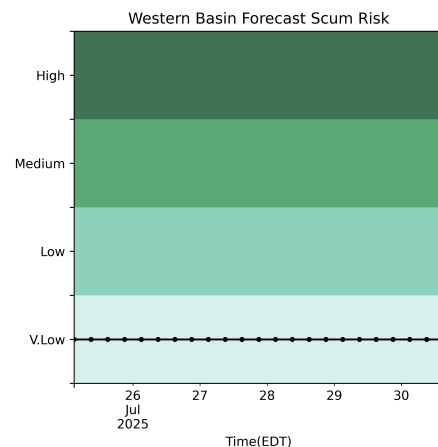


Current Lake Erie Sentinel-3 satellite imagery from the Ocean and Land Color Imager (OLCI) on Jul 23, 2025, showing bloom location and extent in the western basin. Grey indicates clouds or missing data. The estimated threshold of cyanobacteria detection is 20,000 cells/mL. Inset shows a truecolor image of the entire lake. Data derived from Copernicus Sentinel-3.



Wind speed and direction from SouthBassIs, OH. Blooms mix through water column at wind speeds > 15 knots.

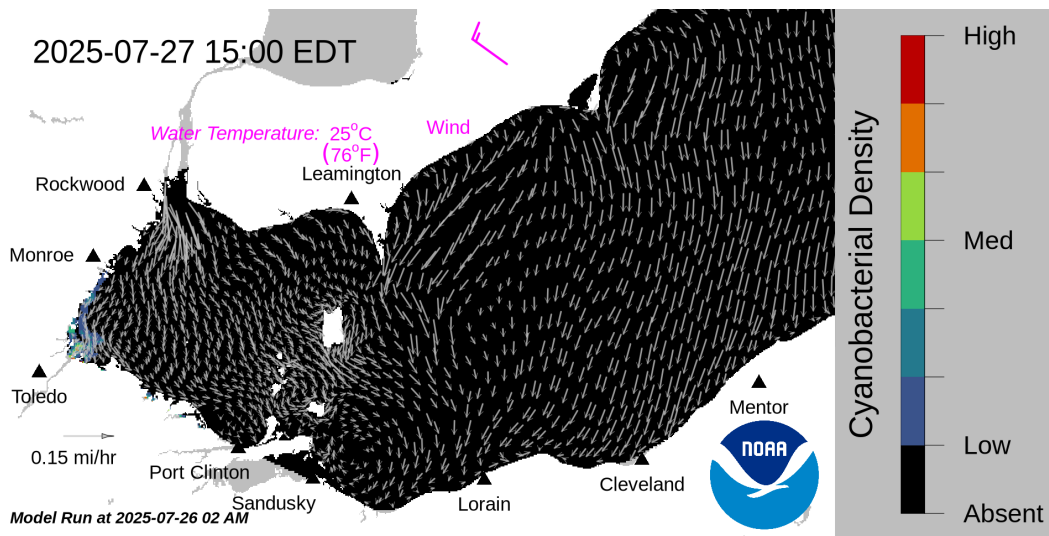
For more information visit: [coastalscience.noaa.gov/science-areas/habs/hab-forecasts/lake-erie/](https://coastalscience.noaa.gov/science-areas/habs/hab-forecasts/lake-erie/)



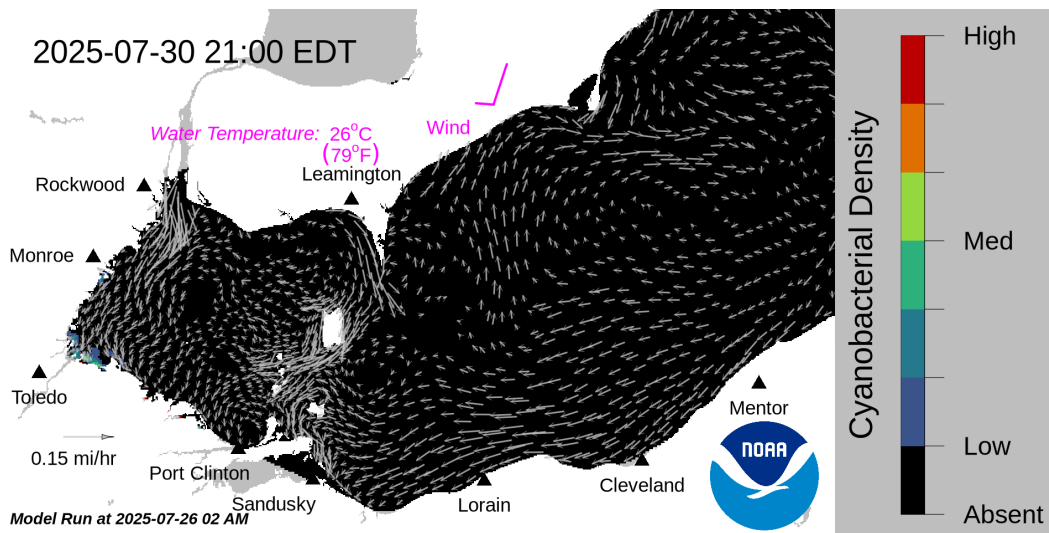
Where the bloom is present in western Lake Erie, the potential risk of scum.

# Lake Erie Harmful Algal Bloom Forecast

2025-07-26



Forecast surface bloom position for Jul 27, modeled from the last satellite image with water currents estimated from the Lake Erie Operational Forecast System (LEOFS). Potential for bloom movement is forecast in 3-dimensions with a hydrodynamic model using satellite imagery and currents. The modeled output does not contain clouds. Black indicates the absence of chlorophyll and gray indicates area with no data. The arrows show forecasted currents. Water temperature and winds (in magenta) are the averages for the western basin from the model.



Forecast surface bloom position for Jul 30. Black indicates the absence of chlorophyll and gray indicates area with no data. The arrows show forecasted currents. Water temperature and winds (in magenta) are the averages for the western basin from the model.

## Additional resources:

- [Archived Lake Erie Forecasts](#)
- [More information](#)
- [FAQs](#)
- [Contributors and Data Providers](#)
- [Lake Erie HAB Forecast Guide](#)

For more information visit: [coastalscience.noaa.gov/science-areas/habs/hab-forecasts/lake-erie/](https://coastalscience.noaa.gov/science-areas/habs/hab-forecasts/lake-erie/)

1305 East West Hwy, Rm 8110  
Silver Spring, Maryland 20910  
[coastalscience.noaa.gov](https://coastalscience.noaa.gov)

 [noaa.coastalsci](#) | [@noaa.coastal.sci](#)