

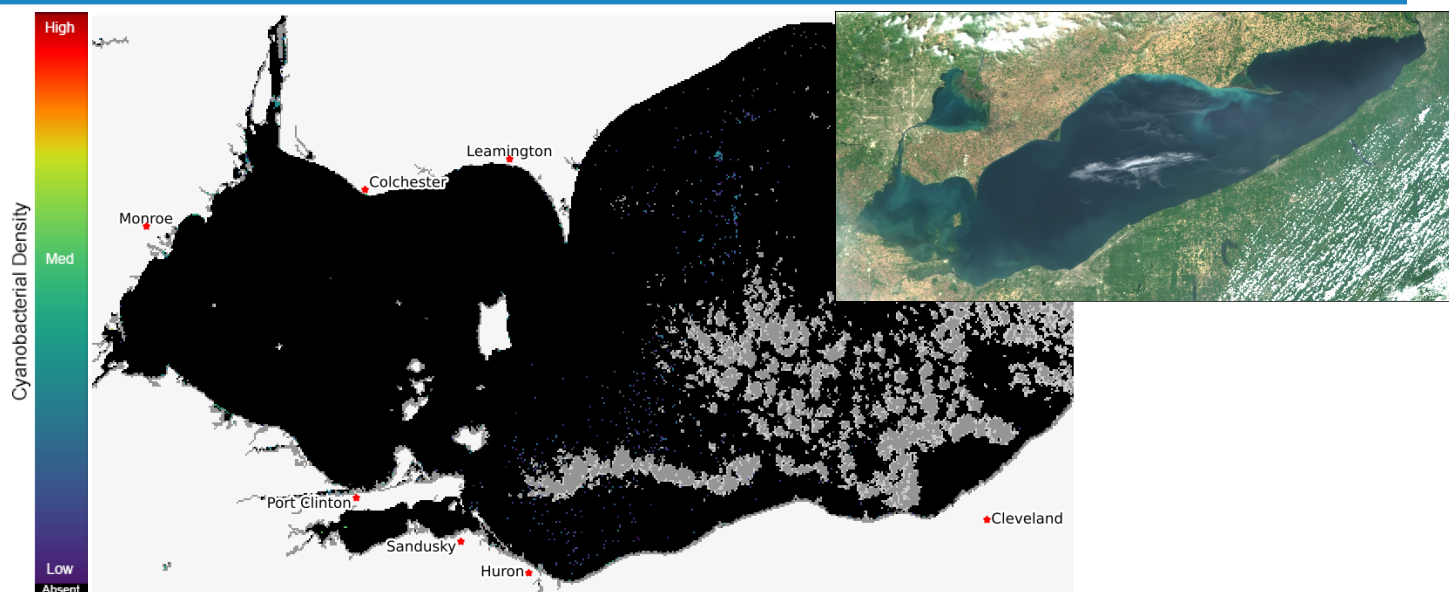
Lake Erie Harmful Algal Bloom Forecast

2025-06-10

Summary

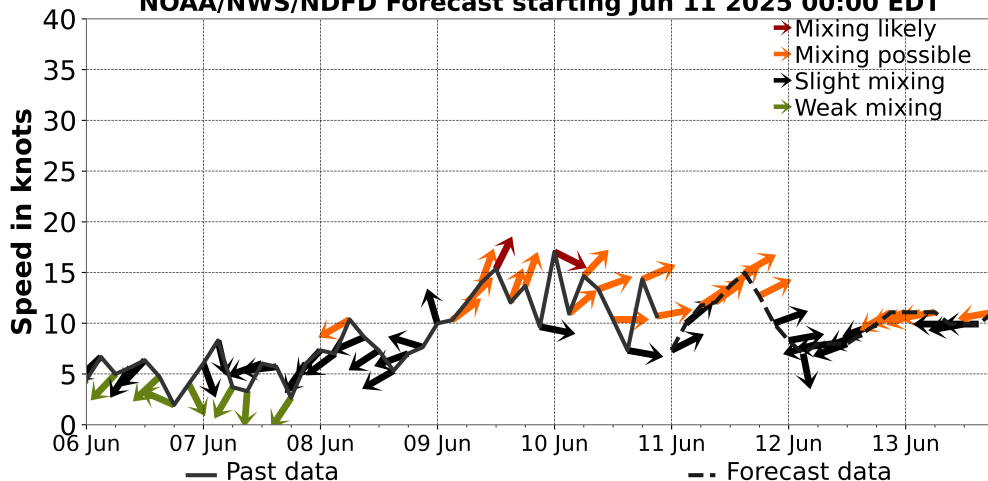
Cyanobacteria is not currently detectable by satellite in western Lake Erie. We have begun issuing weekly Early Season Bloom Projections for the 2025 cyanobacteria bloom season. The current bulletin can be found by [clicking here](#). We will begin updating the Observed and Forecasted Bloom Position in late June. For recent satellite images of western Lake Erie, check [the western Lake Erie HAB Monitoring Page](#). No recent toxin data currently available. --The NCCOS HAB Forecasting Team 05/12/2025

The past few days of imagery can be seen at [the HAB monitoring site](#). The Lake Erie Forecast is operated by the National Centers for Coastal Ocean Science. Contact hab@noaa.gov for technical Questions. Last Updated: 2025-06-10 11 PM EST



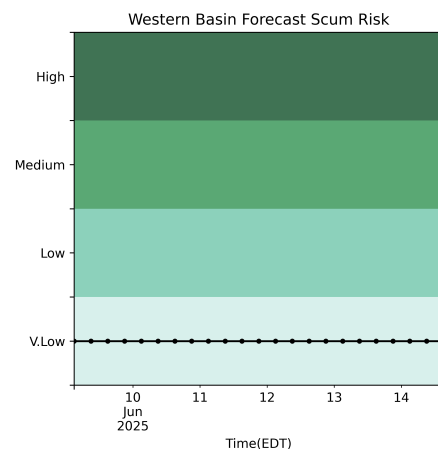
Current Lake Erie Sentinel-3 satellite imagery from the Ocean and Land Color Imager (OLCI) on Nov 02, 2024, showing bloom location and extent in the western basin. Grey indicates clouds or missing data. The estimated threshold of cyanobacteria detection is 20,000 cells/mL. Inset shows a truecolor image of the entire lake. Data derived from Copernicus Sentinel-3.

ndbc.noaa.gov Winds at South Bass Is, OH NOAA/NWS/NDFD Forecast starting Jun 11 2025 00:00 EDT



Wind speed and direction from SouthBassIs, OH. Blooms mix through water column at wind speeds > 15 knots.

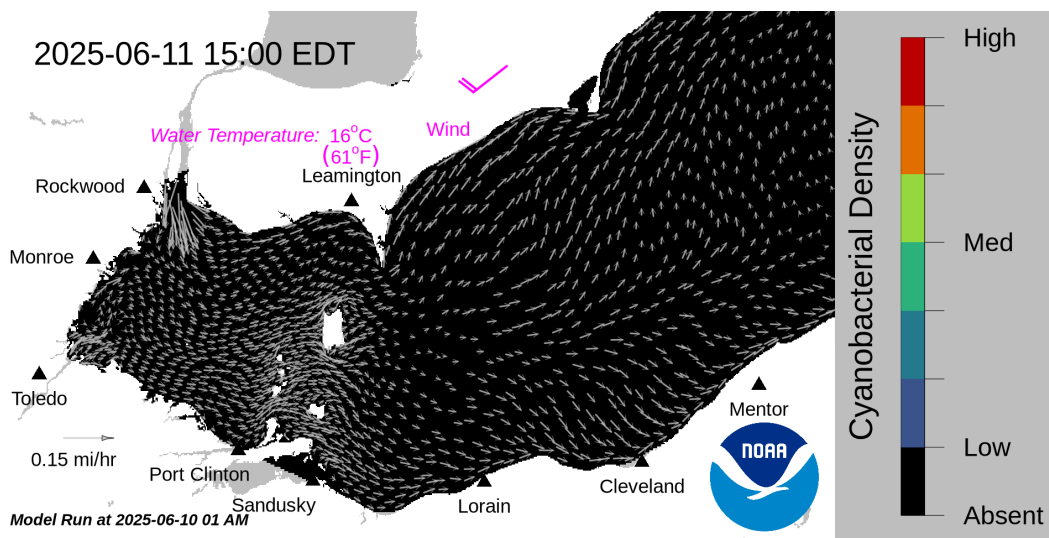
For more information visit: coastalscience.noaa.gov/science-areas/habs/hab-forecasts/lake-erie/



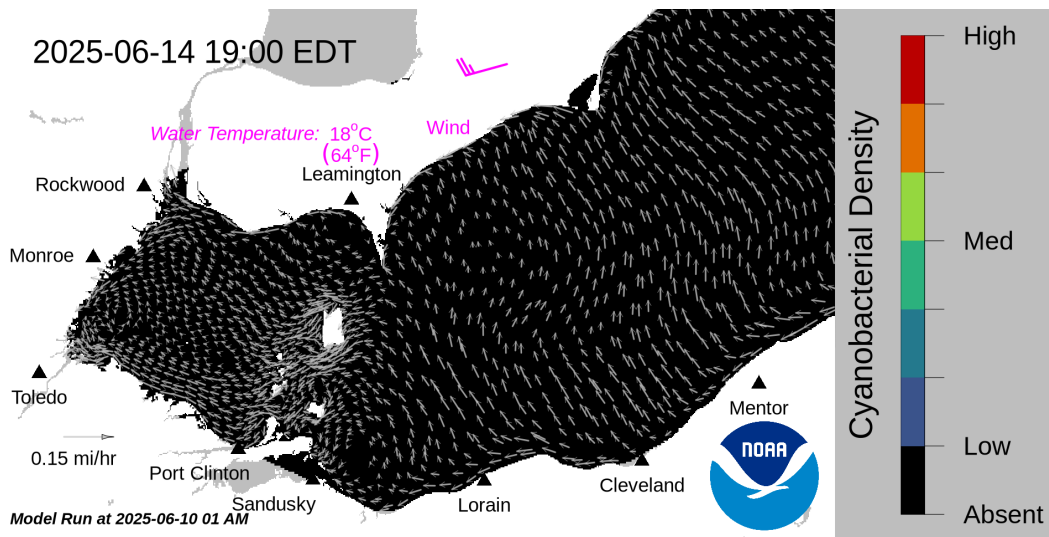
Where the bloom is present in western Lake Erie, the potential risk of scum.

Lake Erie Harmful Algal Bloom Forecast

2025-06-10



Forecast surface bloom position for Jun 11, modeled from the last satellite image with water currents estimated from the Lake Erie Operational Forecast System (LEOFS). Potential for bloom movement is forecast in 3-dimensions with a hydrodynamic model using satellite imagery and currents. The modeled output does not contain clouds. Black indicates the absence of chlorophyll and gray indicates area with no data. The arrows show forecasted currents. Water temperature and winds (in magenta) are the averages for the western basin from the model.



Forecast surface bloom position for Jun 14. Black indicates the absence of chlorophyll and gray indicates area with no data. The arrows show forecasted currents. Water temperature and winds (in magenta) are the averages for the western basin from the model.

Additional resources:

For more information visit: coastalscience.noaa.gov/science-areas/habs/hab-forecasts/lake-erie/

1305 East West Hwy, Rm 8110
Silver Spring, Maryland 20910
coastalscience.noaa.gov

[f](#) [X](#) [in](#) [noaa.coastalsci](#) | [@noaa.coastal.sci](#)