

Lake Erie Hypoxia Forecast

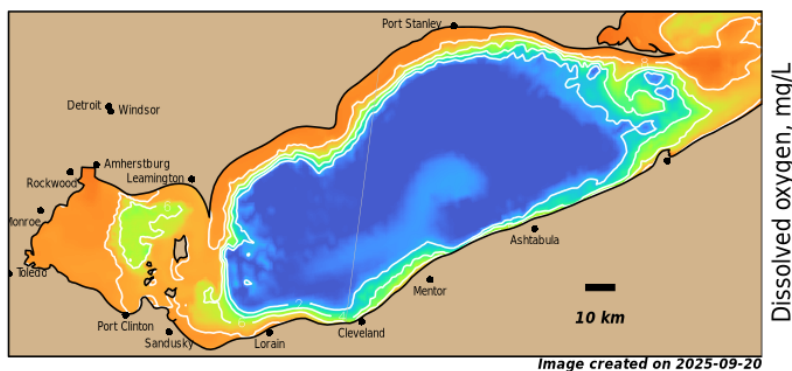
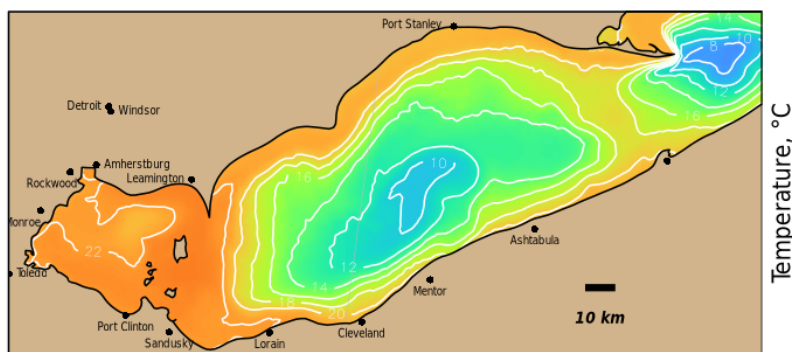
2025-09-20

Summary

Hypoxic upwelling is predicted for Saturday along the OH coast from east of Mentor to Ashtabula, OH. Risk decreases after Monday. This text will change as the risk changes. ##--Hounshell, Yu 19 Sep 2025

Forecasted Temperatures and Oxygen Levels at Bottom

Sun 21 Sep 2025 11:00 EDT
2025-09-21 15 GMT



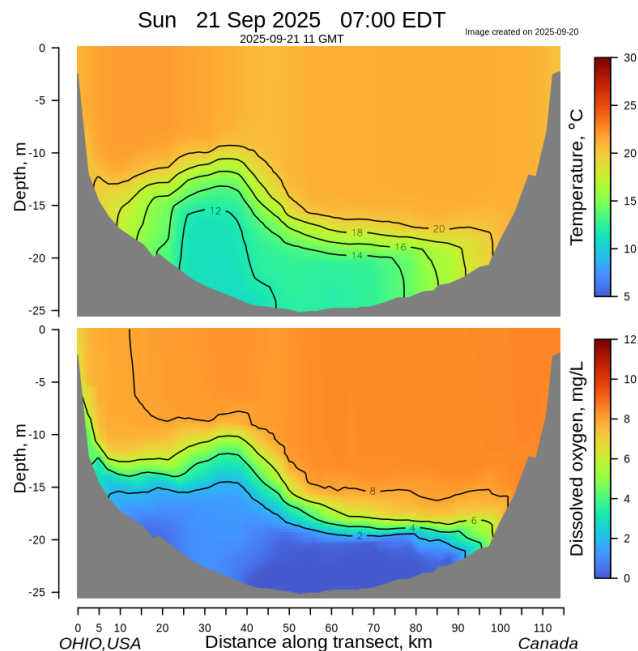
Model output includes near real-time estimated oxygen levels and temperatures in the bottom water across Lake Erie. In the top panel (temperatures), red colors indicate high temperatures (30 C) while blue colors indicate low temperatures (5 C). In the bottom panel (oxygen), red colors indicate high oxygen, while blue-green colors indicate hypoxic (< 2 mg/L) or anoxic (0 mg/L) conditions.

For more information visit: <http://coastalscience.noaa.gov/lake-erie-hypoxia-forecast>

For questions regarding the forecast contact the NCCOS HAB Forecasting Branch: hab@noaa.gov

Vertical transect of Forecasted Oxygen and Temperature

This transect, marked as a light line on the map of Lake Erie, extends from just west of Cleveland, OH to west of Port Stanley, ON. In this cross-sectional view you can see today's modeled distribution of temperatures (top) and oxygen (bottom) in the water column in the center of the lake. The color scales are the same as in the whole-lake images.



Lake Erie Hypoxia Forecast

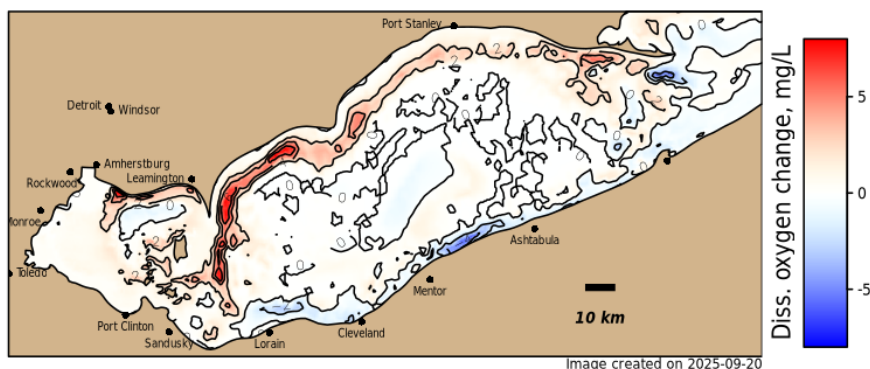
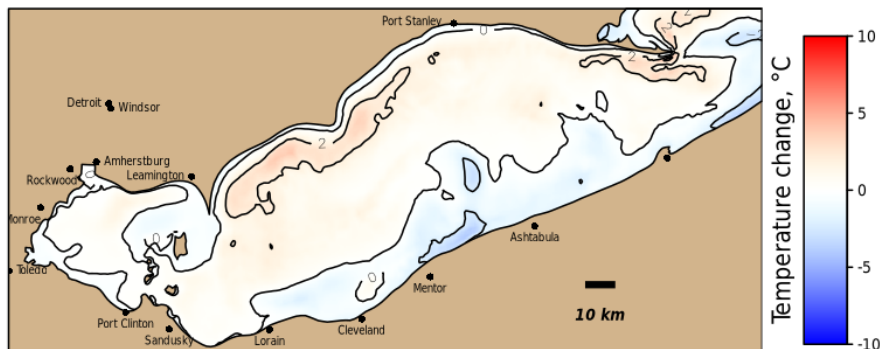
2025-09-20

Lake Erie Forecasted Changes in Bottom Water Temperature and Dissolved Oxygen

Change in Bottom Temperature and Dissolved Oxygen

Sun, 21 Sep 2025 12:00 with reference to Fri, 19 Sep 12:00 EDT

2025-09-21 16 with reference to 09-19 16 GMT



Changes in bottom water temperature and dissolved oxygen (mg/L)

Lake Erie Forecasted Winds Counts by Direction (Wind Rose Plot)

This panel depicts the frequency of occurrence of wind directions and speeds for yesterday, today, tomorrow, and the following 3 days. The length of each spoke indicates how frequently a wind blows from a particular direction. Wind speeds are indicated by color, as given by the color scale at the bottom of the plot. The data were sampled from the wind data used to drive the hydrodynamic model simulation at locations around the central basin of Lake Erie

Wind Rose, Lake Erie Central Basin

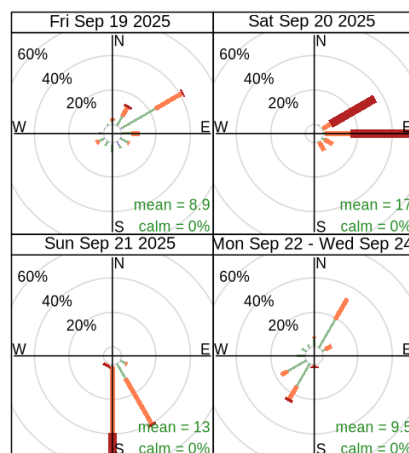


Image created on 2025-09-20

Frequency of counts by wind direction (%)

For more information visit: <http://coastalscience.noaa.gov/lake-erie-hypoxia-forecast>

For questions regarding the forecast contact the NCCOS HAB Forecasting Branch: hab@noaa.gov

1305 East West Hwy, Rm 8110
Silver Spring, Maryland 20910
coastalscience.noaa.gov

[f](#) [X](#) [in](#) [noaa](#)coastalsci | [@noaa.coastal.sci](#)