

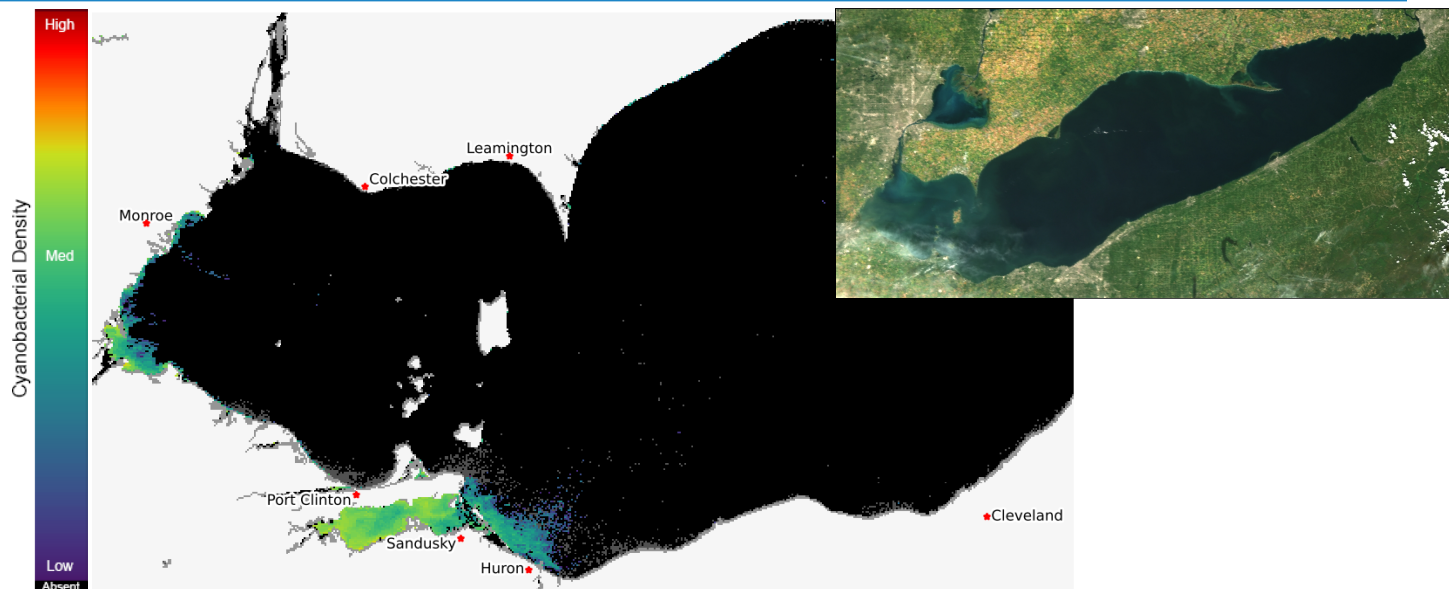
# Lake Erie Harmful Algal Bloom Forecast

2025-09-16

## Summary

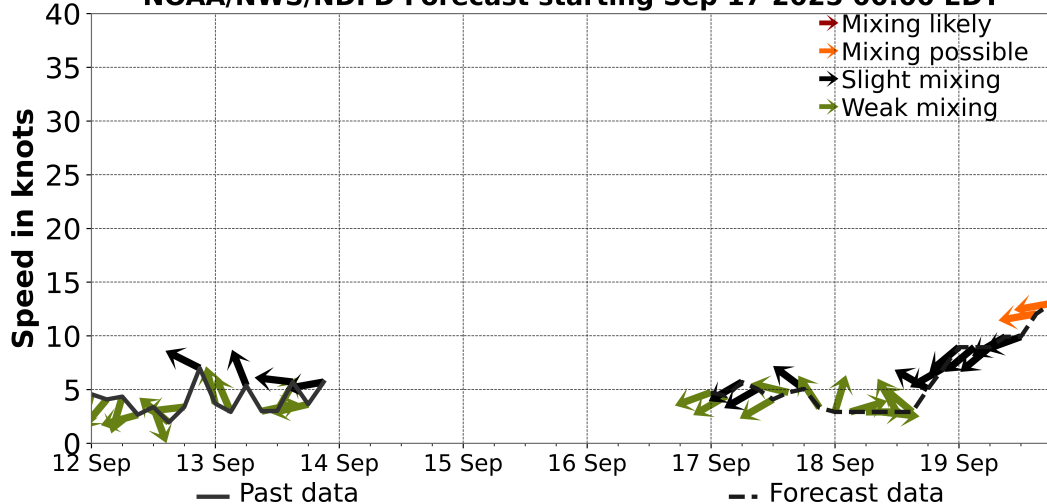
The cyanobacteria bloom is present in western Lake Erie but cloud cover or winds above 9.0 mph prevent determining the area. The bloom currently extends along the shore from Maumee Bay north to Stony Point, MI where the bloom extends into the western basin towards West Sister Island, OH. No recent toxin data currently available for western Lake Erie. --Hounshell, Yu 16 Sep. 2025

The past few days of imagery can be seen at [the HAB monitoring site](#). The Lake Erie Forecast is operated by the National Centers for Coastal Ocean Science. Contact [hab@noaa.gov](mailto:hab@noaa.gov) for technical Questions. Last Updated: 2025-09-16 11 PM EST



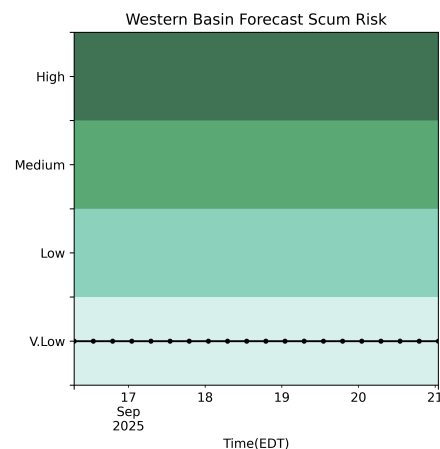
Current Lake Erie Sentinel-3 satellite imagery from the Ocean and Land Color Imager (OLCI) on Sep 16, 2025, showing bloom location and extent in the western basin. Grey indicates clouds or missing data. The estimated threshold of cyanobacteria detection is 20,000 cells/mL. Inset shows a truecolor image of the entire lake. Data derived from Copernicus Sentinel-3.

## ndbc.noaa.gov Winds at South Bass Is, OH NOAA/NWS/NDFD Forecast starting Sep 17 2025 00:00 EDT



Wind speed and direction from SouthBassIs, OH. Blooms mix through water column at wind speeds > 15 knots.

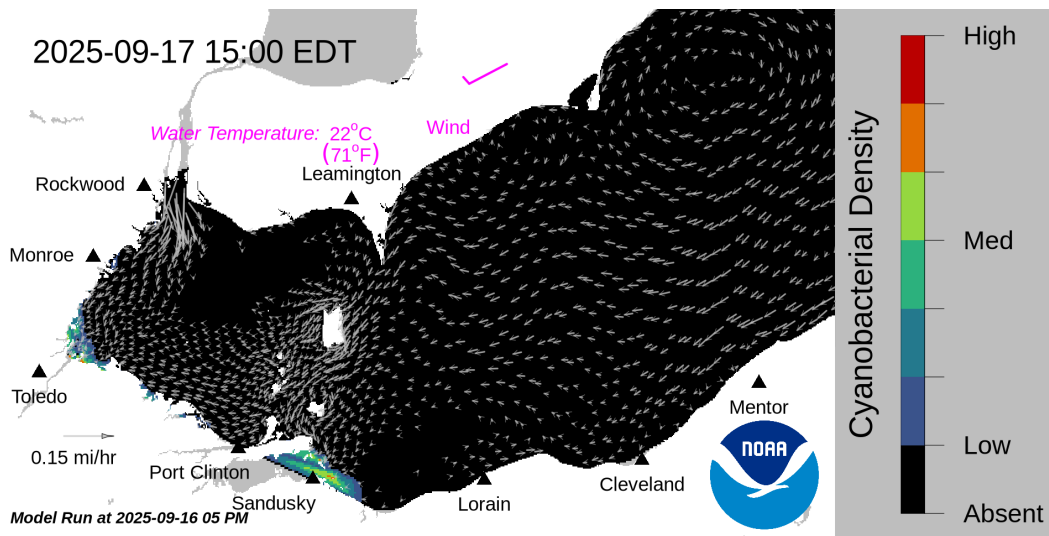
For more information visit: [coastalscience.noaa.gov/science-areas/habs/hab-forecasts/lake-erie/](https://coastalscience.noaa.gov/science-areas/habs/hab-forecasts/lake-erie/)



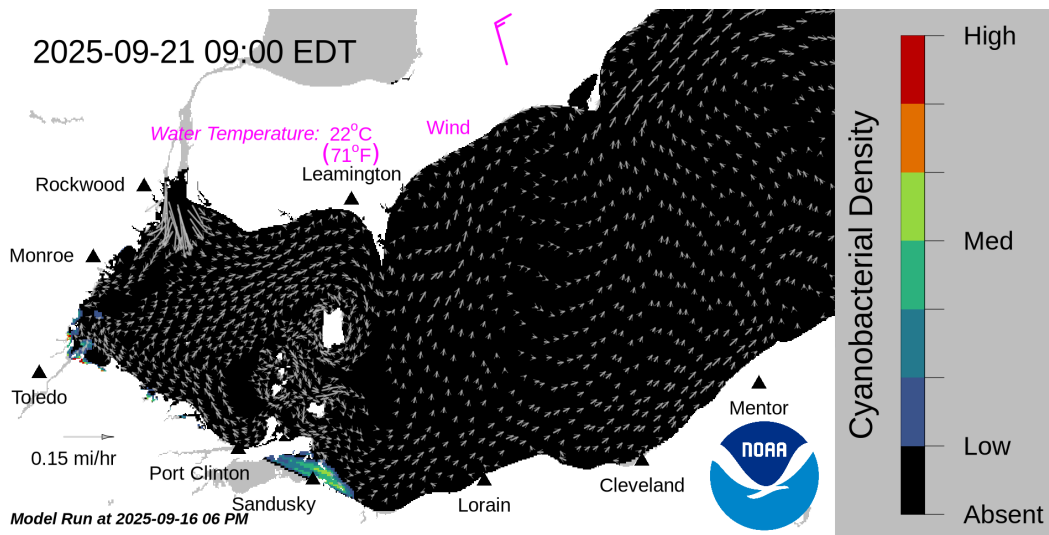
Where the bloom is present in western Lake Erie, the potential risk of scum.

# Lake Erie Harmful Algal Bloom Forecast

2025-09-16



Forecast surface bloom position for Sep 17, modeled from the last satellite image with water currents estimated from the Lake Erie Operational Forecast System (LEOFS). Potential for bloom movement is forecast in 3-dimensions with a hydrodynamic model using satellite imagery and currents. The modeled output does not contain clouds. Black indicates the absence of chlorophyll and gray indicates area with no data. The arrows show forecasted currents. Water temperature and winds (in magenta) are the averages for the western basin from the model.



Forecast surface bloom position for Sep 21. Black indicates the absence of chlorophyll and gray indicates area with no data. The arrows show forecasted currents. Water temperature and winds (in magenta) are the averages for the western basin from the model.

## Additional resources:

- [Archived Lake Erie Forecasts](#)
- [More information](#)
- [FAQs](#)
- [Contributors and Data Providers](#)
- [Lake Erie HAB Forecast Guide](#)

For more information visit: [coastalscience.noaa.gov/science-areas/habs/hab-forecasts/lake-erie/](https://coastalscience.noaa.gov/science-areas/habs/hab-forecasts/lake-erie/)

1305 East West Hwy, Rm 8110  
Silver Spring, Maryland 20910  
[coastalscience.noaa.gov](https://coastalscience.noaa.gov)

[f](#) [x](#) [in](#) [noaa.coastalsci](#) | [@noaa.coastal.sci](#)