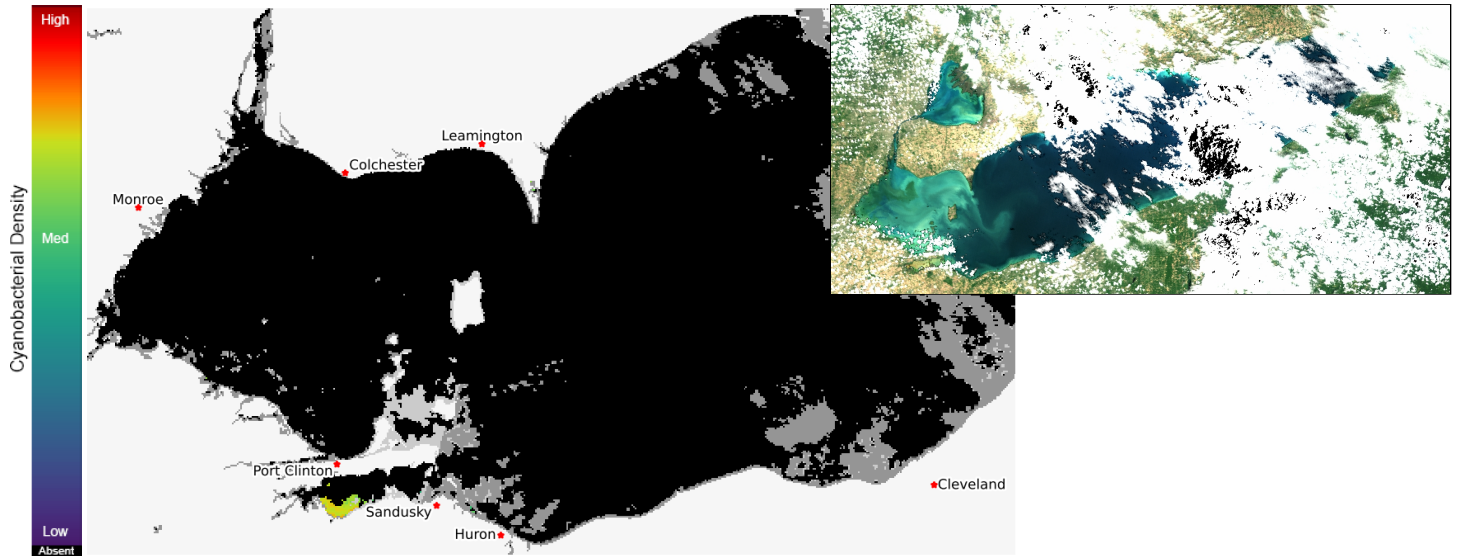


# Lake Erie Harmful Algal Bloom Forecast

2026-06-21

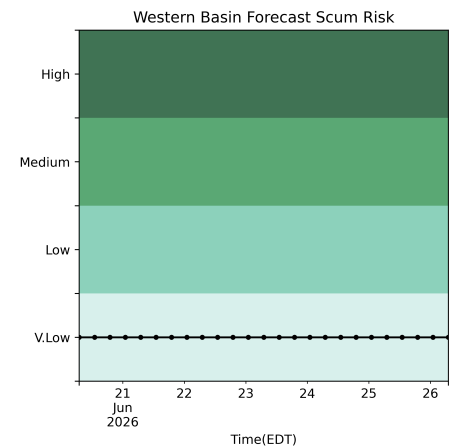
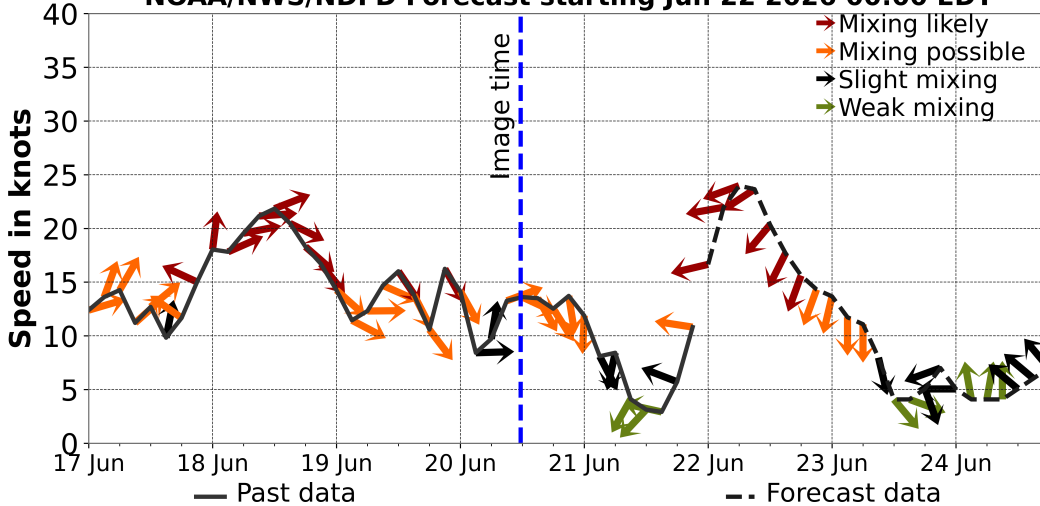
## Summary

Observed and Forecasted Bloom Position is now being updated daily, although so far there is no large cyanobacteria bloom in the Western Basin. The 2026 seasonal forecast for the cyanobacteria HAB in Lake Erie will be issued June 25th. The current early season projection bulletin can be found by [clicking here](#). Weekly high resolution imagery of Maumee bay can also be found at [the Demonstration Great Lakes \(20m\) HAB Monitoring Page](#). --NCCOS HAB Forecasting Team, 12 June 2026  
 The past few days of imagery can be seen at [the HAB monitoring site](#). The Lake Erie Forecast is operated by the National Centers for Coastal Ocean Science. Contact [hab@noaa.gov](mailto:hab@noaa.gov) for technical Questions. Last Updated: 2026-06-21 11 PM EST



Current Lake Erie Sentinel-3 satellite imagery from the Ocean and Land Color Imager (OLCI) on Jun 20, 2026, showing bloom location and extent in the western basin. Grey indicates clouds or missing data. The estimated threshold of cyanobacteria detection is 20,000 cells/mL. Inset shows an enhanced truecolor image of the entire lake. Data derived from Copernicus Sentinel-3.

**ndbc.noaa.gov Winds at Erie Islands, OH**  
**NOAA/NWS/NDFD Forecast starting Jun 22 2026 00:00 EDT**



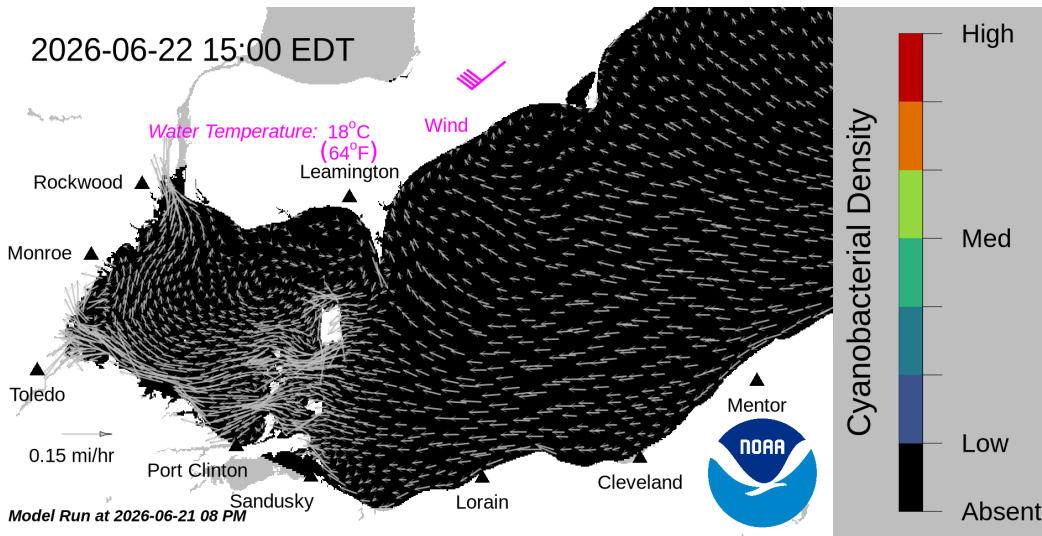
Wind speed and direction from Erielslands, OH. Blooms mix through water column at wind speeds > 15 knots.

Where the bloom is present in western Lake Erie, the potential risk of scum.

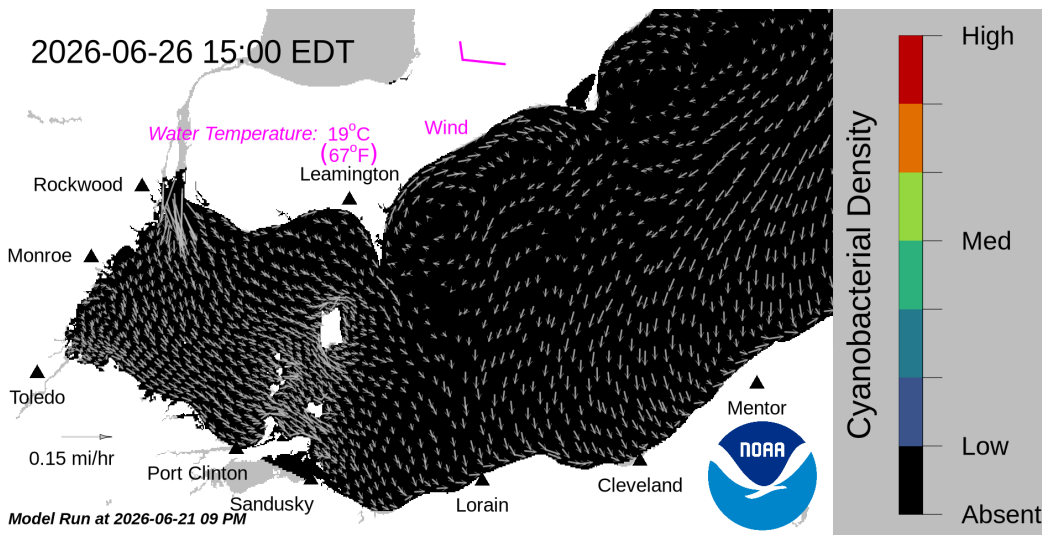
For more information visit: [coastalscience.noaa.gov/science-areas/habs/hab-forecasts/lake-erie/](https://coastalscience.noaa.gov/science-areas/habs/hab-forecasts/lake-erie/)

# Lake Erie Harmful Algal Bloom Forecast

2026-06-21



Forecast surface bloom position for Jun 22, modeled from the last satellite image with water currents estimated from the Lake Erie Operational Forecast System (LEOFS). Potential for bloom movement is forecast in 3-dimensions with a hydrodynamic model using satellite imagery and currents. The modeled output does not contain clouds. Black indicates the absence of chlorophyll and gray indicates area with no data. The arrows show forecasted currents. Water temperature and winds (in magenta) are the averages for the western basin from the model.



Forecast surface bloom position for Jun 26. Black indicates the absence of chlorophyll and gray indicates area with no data. The arrows show forecasted currents. Water temperature and winds (in magenta) are the averages for the western basin from the model.

## Additional resources:

- [Archived Lake Erie Forecasts](#)
- [More information](#)
- [FAQs](#)
- [Contributors and Data Providers](#)
- [Lake Erie HAB Forecast Guide](#)

For more information visit: [coastalscience.noaa.gov/science-areas/habs/hab-forecasts/lake-erie/](https://coastalscience.noaa.gov/science-areas/habs/hab-forecasts/lake-erie/)